

FD, C.O.P., B.C.F. OF THE NORTHWEST QUARTER OF THE SECTION 2, TOWNSHIP 2 N, RANGE 3 E.

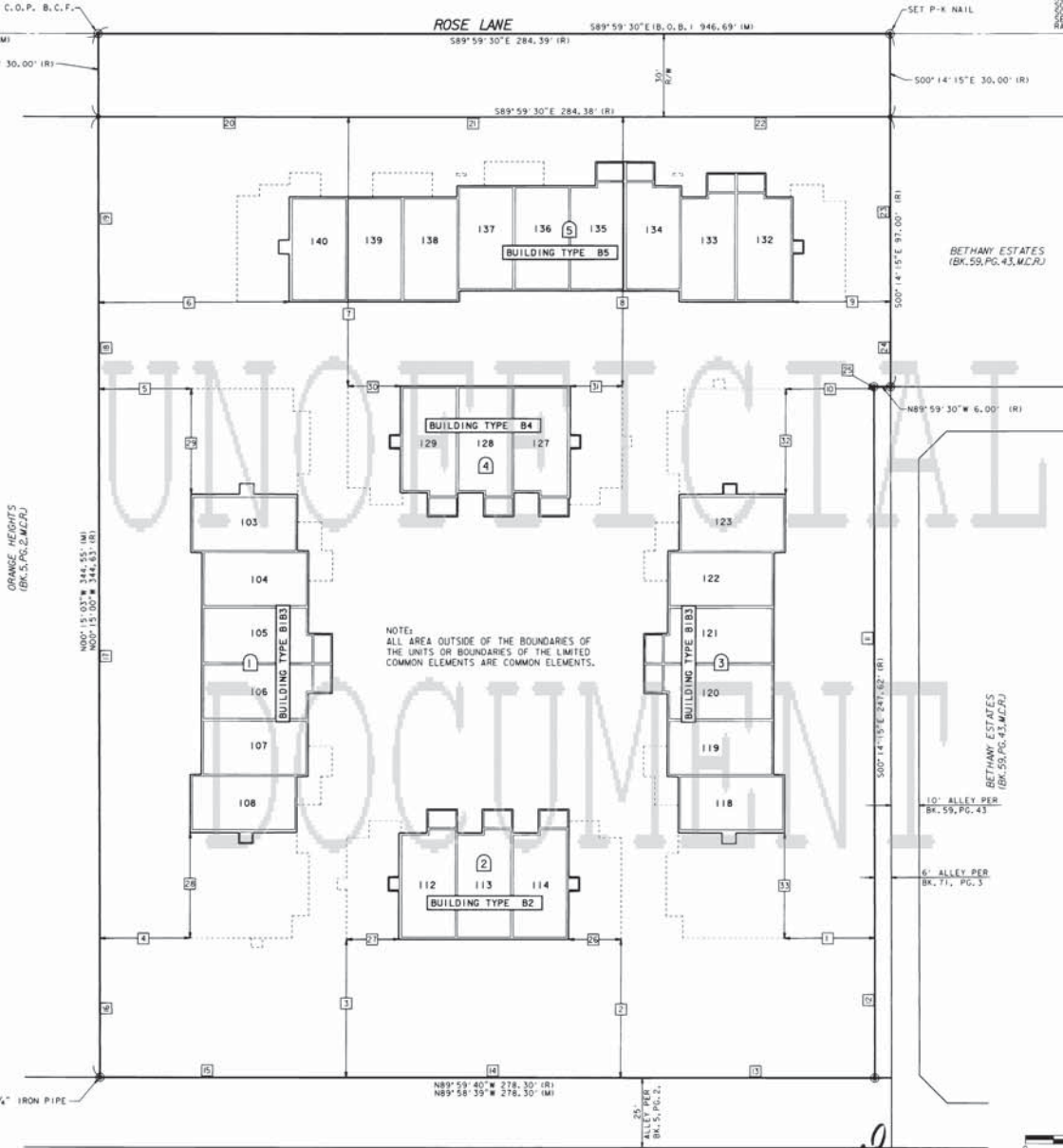
FD, C.O.P., B.C.F. OF THE SOUTHWEST QUARTER OF THE SECTION 2, TOWNSHIP 2 N, RANGE 3 E.

7TH STREET

10TH STREET

ROSE LANE

BUILDING TIES		
NO.	BEARING	LENGTH
1	N89°45'45"E	32.45'
2	N0°00'20"E	49.38'
3	N0°00'20"E	49.37'
4	N89°45'00"E	32.26'
5	N89°45'00"E	33.12'
6	N89°45'00"E	68.25'
7	N0°00'30"E	96.85'
8	N0°00'30"E	96.84'
9	N89°45'45"E	35.05'
10	N89°45'45"E	31.63'
11	N0°14'15"W	196.93'
12	N0°14'15"W	49.99'
13	N89°59'40"W	91.51'
14	N89°59'40"W	98.60'
15	N89°59'40"W	88.19'
16	N0°15'00"W	49.68'
17	N0°15'00"W	196.94'
18	N0°15'00"W	30.85'
19	N0°15'00"W	67.16'
20	N89°59'30"W	89.71'
21	N89°59'30"W	98.60'
22	N89°59'30"W	96.07'
23	N0°14'15"W	66.68'
24	N0°14'15"W	30.32'
25	N0°14'15"W	0.70'
26	S90°00'00"W	18.83'
27	S90°00'00"W	18.71'
28	N0°00'00"E	37.88'
29	S0°00'00"E	37.88'
30	S90°00'00"E	18.83'
31	S90°00'00"W	18.71'
32	S0°00'00"W	37.88'
33	N0°00'00"E	37.88'



NOTE: ALL AREA OUTSIDE OF THE BOUNDARIES OF THE UNITS OR BOUNDARIES OF THE LIMITED COMMON ELEMENTS ARE COMMON ELEMENTS.

BOOK 857 PAGE 31  
 OFFICIAL RECORDS OF  
 MARICOPA COUNTY RECORDER  
 HELEN PURCELL  
 2006-1069823  
 08/10/2006 02:28 PM

LEGEND

- INDICATES ROADWAY CENTERLINE
- INDICATES BOUNDARY / PROPERTY LINE
- 3 INDICATES BUILDING NUMBER
- 101 INDICATES UNIT NUMBER
- ⊕ INDICATES SECTION OR 1/4 SECTION CORNER
- ⊙ INDICATES SUBDIVISION CORNER, SET 1/2" CAPPED REBAR, R.L.S. NO. 26409, UNLESS OTHERWISE NOTED
- INDICATES PROPERTY CORNER, 1/2" REBAR TO BE SET, R.L.S. NO. 26409, UNLESS OTHERWISE NOTED
- R/W INDICATES RIGHT OF WAY
- C.O.P. INDICATES CITY OF PHOENIX
- B.O.B. INDICATES BASIS OF BEARING
- FD. INDICATES FOUND
- B.C.F. INDICATES BRASS CAP FLUSH
- B.C.H.H. INDICATES BRASS CAP IN HANDHOLE
- (R) INDICATES RECORD
- (M) INDICATES MEASURED
- (CM) INDICATES CALCULATED FROM MEASURED



CONDOMINIUM PLAT OF  
 ANDARE

THIRD FLOOR LEVEL  
 SITE PLAN

SHEET 5 OF 10

**RICK**  
 ENGINEERING COMPANY  
 6150 NORTH 16TH STREET  
 PHOENIX, AZ 85016  
 602.957.2350  
 FAX: 602.285.2396  
 rickengineering.com

DATE: 08-AUG-2006	PROJECT NO. 34038	DRAWN BY: F.W. M.M.
-------------------	-------------------	---------------------

PRELIMINARY-NOT FOR CONSTRUCTION OR RECORDING

D:\3471\34713cp05.dgn  
 08-AUG-2006