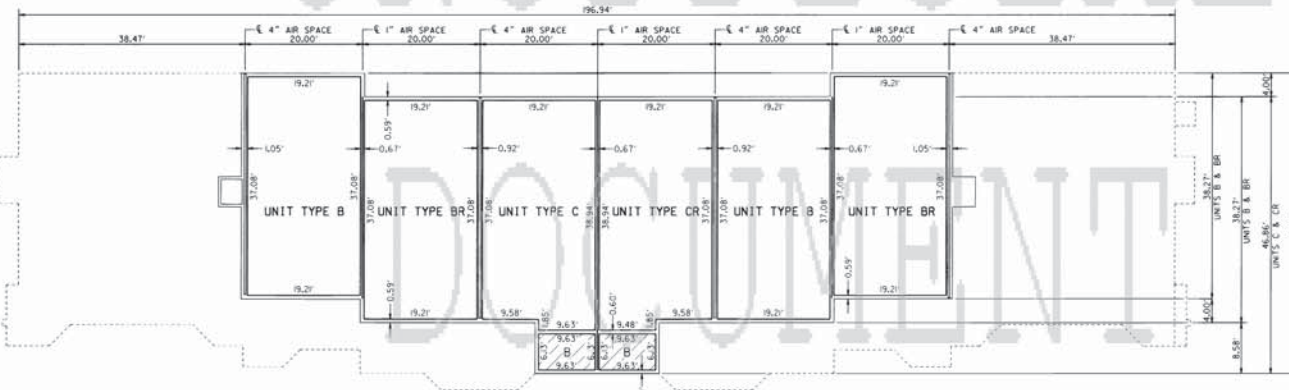


**BUILDING TYPE B5
THIRD FLOOR
UNITS 132,133,134,135,
136,137,138,139,140**



**BUILDING TYPE B1B3
THIRD FLOOR
UNITS 103,104,105,106,
107,108,118,119,120,
121,122,123**

BOOK 857 PAGE 31
OFFICIAL RECORDS OF
MARICOPA COUNTY RECORDER
HELEN PURCELL
2006-1069823
08/10/2006 02:39 PM

- LEGEND**
- INDICATES BOUNDARY OUTLINE OF UNITS, GARAGES, PATIOS, BALCONIES AND STORAGE TO FINISHED STUDIOS
 - - - INDICATES PLANE OF OUTSIDE WALL SURFACE
 - ▨ INDICATES AREA OF LIMITED COMMON ELEMENTS WHICH ARE ASSIGNED TO THE UNITS TO WHICH THEY ARE APPURTENANT
 - UNIT TYPE B1 INDICATES UNIT TYPE
 - B INDICATES BALCONY AREA
 - P INDICATES PATIO AREA

NOTE: ALL ANGLES ARE 90° OR 45° UNLESS OTHERWISE SPECIFIED



**BUILDINGS TYPE B1B3 & B5
3RD FLOORS**

SHEET 8 OF 10

**CONDOMINIUM PLAT OF
ANDARE**

RICK
ENGINEERING COMPANY
1130 NORTH 16TH STREET
PHOENIX, AZ 85016
602.937.3330
FAX:602.285.2396
rickengineering.com

Project	San Diego	Kennewick	Orange	Sacramento
DATE: 08-AUG-2006	PROJECT NO. 34338	DRAWN BY: FW, MLM		

PRELIMINARY-NOT FOR CONSTRUCTION OR RECORDING

Or:\3413\3413cp08.dgn
08 AUG 2006